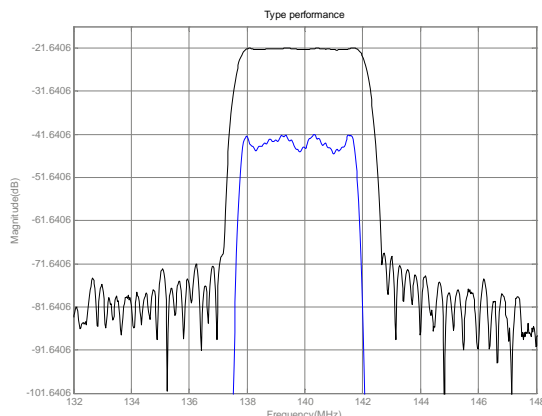




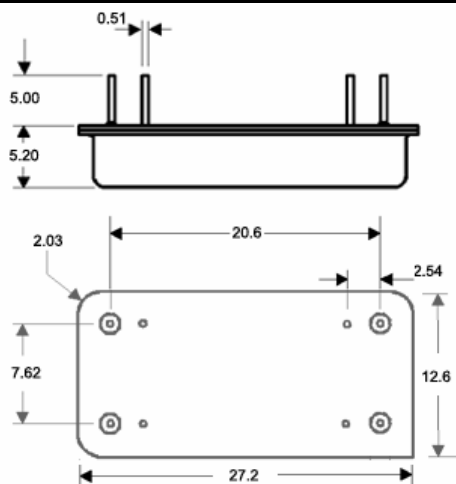
## LBS14023 SAW Filter Electrical Characteristic

<i>Specifications</i>				
Parameter	Unit	Minimum	Typical	Maximum
<b>Center Frequency</b>	MHz	139.9	140	140.1
<b>Insertion Loss</b>	dB		23	27
<b>1 dB Bandwidth</b>	MHz	4.0	4.10	
<b>3 dB Bandwidth</b>	MHz	4.2	4.32	
<b>40dB Bandwidth</b>	MHz		5.32	5.5
<b>Passband variation</b>	dB		0.5	1.0
<b>Phase Linearity</b>	degrees		3	4.3
<b>Group Delay Variation</b>	nsec		100	200
<b>Absolute Delay</b>	usec		2.6	
<b>Ultimate Rejection</b>	dB	45	50	
<b>Substrate Material</b>		Quartz		
<b>Ambient Temperature</b>	°C	25		
<b>Package Size</b>		DIP2712 (27.2x12.7x5.2mm <sup>3</sup> )		

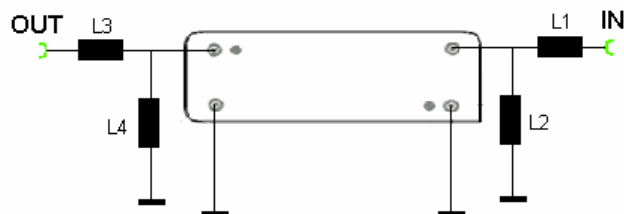
### *Typical Performance*



### *Package Outline*



### *Matching Configuration*



L1 = 180nH L2 = 270nH

L3 = 220nH L4 = 120nH

**Source/Load Impedance = 50 ohm**

Notes - Component values may change depending on board layout.